



ENDOLINQ™

CO₂ Insufflator & Irrigation Pump

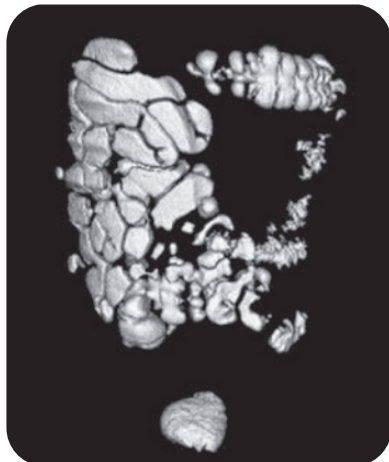
Product Brochure

Introducing ENDOLINQ™

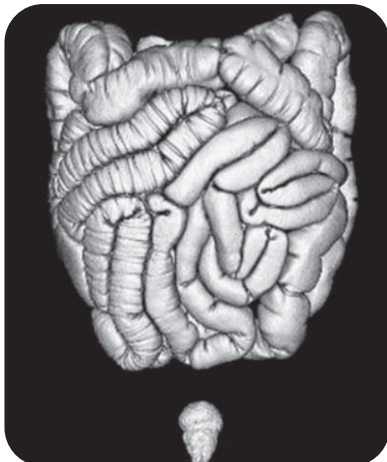
Endoscopic CO2 Insufflator

Carbon Dioxide is a more ideal material for insufflation compared to room air, due to its fast absorbing nature. The implementation of Carbon Dioxide in endoscopic procedures drastically reduces discomfort and abdominal pain, prevents serious complications in the case of perforation.

Carbon Dioxide insufflation



Room air insufflation



Patient comfort

ENDOLINQ™ CO2 insufflator provides better flow rate and precise control compared to traditional two-stage regulator on CO2 tank.

Compact design

The compact enclosure of ENDOLINQ™ ensures you can place it anywhere, even on trolley that is tightly packed.

Safety

- Pressure alarm will warn the user and automatically shut down at threshold high or low pressure.
- Flow filtering will stabilize the gas flow and filter out impurity, ensuring a safe and steady environment.

Precision control

- 2-level flow rate
- LED numeric display
- Automatic timed shut-off

Compatibility

ENDOLINQ™ works with all major endoscopy brands.

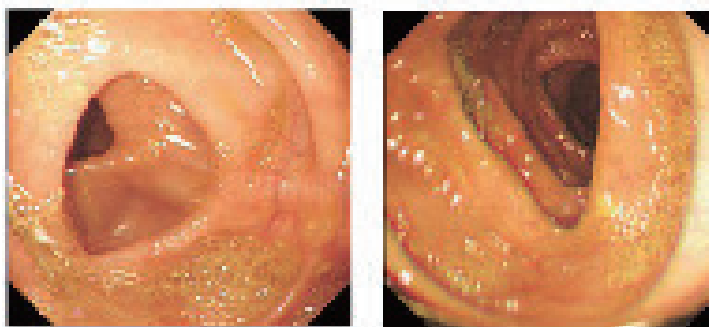
It can be easily set up with reusable tubing or 24 hours disposable tubing and Yoke regulator.

Input and output	Maximum input pressure: 0.9 MPa (after depressurization)	Output volume: 2L/Min (± 0.3L/min) 3L/Min (± 0.3L/min)
Product size and weight	Dimensions: 128 mm(W) * 330 mm(D) * 155 mm(H)	Weight: 5 Kg
Power requirements	Dimensions: 100-240 V	Frequency: 50 Hz

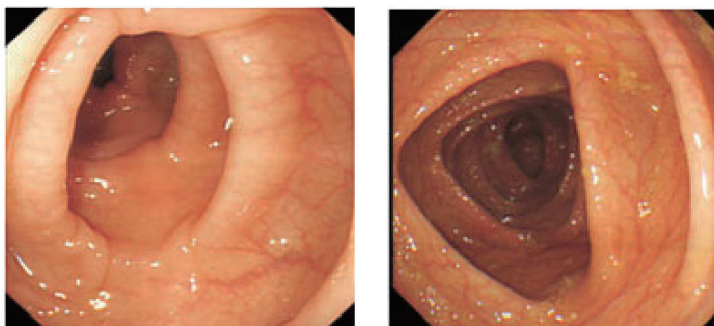
Endoscopic Irrigation Pump

Designed to deliver powerful, adjustable and steady flow, Endolinq is your ideal choice of Endoscopic Irrigation pump. Working compatibly with all major endoscopic brands, it helps physicians to swiftly clear out bubbles, blood and other substances that obstruct the view, achieves higher diagnostic accuracy and better outcome.

Pre flush



After flush



Flow adjustments

Bright LED indicator with 10-Level flow control.
Smart and easy adjustments.

Safety

System automatically cut off if connection falls off.

Auto switch-off

Irrigation automatically stops every 20-second interval.

Compatibility

Endolinq works with all major endoscopy and disposable tubings.

Input and output	Maximum feeding pressure: <400 kPa	Flow rate: 0 - 1000 ml/min
Product size and weight	Dimensions: 324 mm(W) * 160 mm(D) * 155 mm(H)	Weight: 6 Kg
Function	Single output duration: <20s	Operation noise: < 60 dB(A)



Chongqing JINSHAN Science & Technology (Group) Co., Ltd

NO.18 Nishang Road, Liangjiang New Area, 401120, Chongqing, China

T: +86-23-8609 8096 F: +86-23-8609 8777

Email: international@jinshangroup.com

www.jinshangroup.com

